

WILLIAMS news

VOL. XXXVI2, NO. 3

P.O. BOX 73, WILLIAMS, OREGON 97544

FEBRUARY 15, 2009

Online at: www.williamsnews.org

E-mail: williamsnews@gmail.com

A free, bi-monthly newsletter dedicated to informing, educating and enlightening the community of Williams.

YOU KNOW YOU'RE A WILLIAMS LOCAL WHEN YOU KNOW:

by Evelyn Roether

MATCH THE QUESTIONS (NUMBERS) TO THE ANSWERS (LETTERS) TO FIND OUT!

Questions:

1. Where are: Cogle's Corner, Four Corners & the "Y"?
2. Where is the "7" and what does snow on the "7" on 4th of July mean?
3. Where is the mouth of Williams Creek?
4. Whom do you call to rent the Grange?
5. When is The Pancake Breakfast?
6. What is a Williams Quilt?
7. Where was the old post office located?
8. Where is the Free Store?
9. Which mountain is Sugarloaf?
10. Have you climbed to the top of Grayback Mountain?
11. What was Scattered Apples?
12. What Williams' resident 'discovered' Oregon Caves?
13. Where did Oregon's piece in the Washington Monument come from?
14. When do the vultures ride the thermals?
15. Where are the areas of black ice in the Williams Valley?
16. Where is Herb Pharm, White Oak Farm and Forest Farm?
17. When and what kind of salmon spawn in Williams Creek?
18. Where was Steve Miller's recording studio?
19. What 4th, 5th and 6th field watershed do you live in?
20. Where is your watershed council office?
21. Which mountain is Grayback?

Answers: (Answers on page 7)

- a. Seen on Sugarloaf, snow there means it's a good water year (according to the real old-timers)
- b. Kim Mericle
- c. Behind the Seventh Day Adventist Church. Open Tuesday mornings.
- d. A hand-made work of love from your friends and neighbors
- e. Next to the Williams Library
- f. The intersection of Williams Hwy and Water Gap; Corner of Cave Camp/Kincaid and Cedar Flat; the intersection of Williams Hwy and East Fork Rd.
- g. At what is now known as "Pacifica: A Garden in the Siskiyou" on Water Gap Rd.
- h. The curve on Williams Highway between Lower Powell Creek Rd and Provolt, the sharp curve on upper Kincaid Road, among others.
- i. This one is behind the other.
- j. 4th - Applegate; 5th - Williams Creek; 6th - East Fork, West Fork, Mainstem Williams, Powell Creek
- k. The mountain in front as seen from downtown Williams
- l. A hotly contested BLM Timber Sale in Williams. Finally laid to rest after 8 years of local resistance.
- m. Elijah Davidson
- n. Upstairs at the old Williams firehouse (215 East Fork Rd)
- o. The marble mine off Kincaid Road
- p. YES (O'Brien Creek Trail is one approach)
- q. Second Sunday of the month (except July and August)
- r. About a ¼ mile northwest of Provolt
- s. Just up the road from the Williams General Store; Kincaid Road; Tetherow Road.
- t. Chinook (October-November), Coho (December-January), Steelhead (February-March)
- u. Every September/early October



JANGLES' JUNKYARD

Recycled News and Information
submitted by Jim Krois

ALMANAC: February 15 <> 28, 2009
LAST QUARTER: 16th at 16:37 PST
NEW MOON: 24th at 20:35 PST

A brilliant Venus spectacularly meets a crescent Moon on the 27th.

POSSIBLE LINK BETWEEN DAM AND CHINA QUAKE

Nearly nine months after a devastating earthquake in Sichuan Province, China, left 80,000 people dead or missing, a growing number of American and Chinese scientists are suggesting that the calamity was triggered by a four-year-old reservoir built close to the earthquake's geological fault line.

A Columbia University scientist who studied the quake has said that it may have been triggered by the weight of 320 million tons of water in the Zipingpu Reservoir less than a mile from a well-known major fault. His conclusions, presented to the American Geophysical Union in December, coincide with a



new finding by Chinese geophysicists that the dam caused significant seismic changes before the earthquake. Scientists emphasize that the link between the dam and the failure of the fault has not been conclusively proved, and that even if the dam acted as a trigger, it would only have hastened a quake that would have occurred at some point.

The issue of government accountability and responsiveness has boiled over in China in the past year. The grieving parents of thousands of schoolchildren killed in the disaster have already made the 7.9-magnitude earthquake a political issue, charging that children died needlessly in unsafe school buildings approved by negligent or corrupt officials.

Scientists generally agree that a reservoir, no matter how big, cannot by itself cause an earthquake. But Leonardo Seeber, a senior scientist with the Lamont-Doherty Earth Observatory of Columbia University, said the impact of so much water could hasten an earthquake's occurrence if geological conditions for a quake already existed. He said the best known example was a 1967 earthquake triggered by the Koyna Dam in a remote area of India, with a magnitude of about 6.5 and a death toll of about 180 people.

SCA WORK PARTY

by Cheryl Bruner, SCA Board

Your help is needed to build a bridge over Blue Jay Creek and plant trees along the creek.

Building the bridge and planting the trees are the next step in the riparian restoration of the now beautiful meandering Blue Jay Creek.

Come see for yourself, bring a hammer and shovel, and we will provide lunch.



When: Saturday
February 28th, 10-2
Where: SCA, 210
Tetherow

ART & WINE AT PACIFICA

by Lou Ann Allen

Pacifica traditionally presents *Art & Wine* on the first Saturday in May. This year the date is May 2, 2009. We've added some additional vintners this year, the music is all set and we still have room for some more artists. If you'd like to show and/or sell, e-mail or call Lou Ann at either 846-6951 or 846-1100.

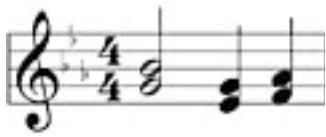
WILLIAMS NEWS VOLUNTEERS

Editors: Sara Katz, Cynthia Elmore
Kathy Escott, Beth Baugh
Contributors: Jim Krois, Pat Rickert, Ray Prag,
Jacki Fredenburg, Kim Mericle
Layout - Liz Butler
Treasurer - Linda DuBose
Printing - David Markle
Distribution - Louise Butler
Website Manager - Micah Owens

The Williams News is a community newsletter published twice each month. We look to members of the community to contribute articles on community issues, events, & activities.

Send Submissions to: PO BOX 73, Williams, OR 97544
or email: williamsnews@gmail.com

Prepaid subscriptions available \$25/year for 23 issues.



AND ON THAT NOTE...

by Kim Mericle



A bimonthly musical calendar featuring Williams musicians & musical happenings in and around our lovely valley.

UPCOMING FEBRUARY SHOWS:

Thursday 19th Live Music

6-9 pm Magnolia Grill

Friday 20th Tim Mitchell

6-9 pm Out of the Way Café

Saturday 21st Southern Oregon Sound

9-12 pm Out of the Way Cafe

Saturday 21st Tim Mitchell

9 pm Knaughty Pine

Thursday 26th Live Music

6-9 pm Magnolia Grill

Friday 27th Contra Dance w/ The Generic String Band

7:30 pm Williams Grange

Friday 27th Apollo String Trio

6-9pm Out of the Way Café

Saturday 28th Oregon Transplant

9-12 pm Out of the Way Cafe

Saturday 28th The Rock Project

9 pm Knaughty Pine

ONGOING MUSIC:

Wednesdays: Live Music

7 pm Applegate Lodge (Call for info)

Second Sundays Bluegrass Jam

11am - 1pm Williams Grange

MARK YOUR CALENDARS:

FRIDAY April 10th The Earl Bros(SF Original

Bluegrass/Old Time Dance Music)

8 pm Williams Grange

IN THE SPOTLIGHT: *The Generic String Band*

The Generic String Band has been playing for contra dances, parties and weddings for about 20 years.

It's current players include:

Walter Lindley (Williams) on bass

Cyd Smith (Williams) on guitar and vocals

Jack Dwyer (Selma) of the *Illinois Valley String Band*, frailing 5 string banjo and mandolin

Dave Hanger (Jacksonville) long time member of GSB, plays fiddle and whistle

Bo Leyden (Ashland) plays tenor banjo and mandolin. He also performs with the Irish Band, *The Mighty Bog Frogs* at Four Daughters Pub in Medford regularly.

GSB will play a **Contra Dance in Williams Friday, February 27th @ the Williams Grange 7:30 pm - 11pm.**

(\$7-10 Sliding Scale) The caller will be **Ruth Lowengart** (Ashland). A lively dance for all skill (or lack of) levels!

This Williams dance and the Ashland March 21st Contra dance will be reunions for the GSB with the addition of Cyd Smith on guitar and Walter Lindley on bass, holding down a tight dance floor groove! Be There & Be Square! More info: 846-6345 Sponsored by the Ashland Folk Music Club.

If you know of any musical happening in the valley or would like to be the featured artist in this column, please email me, kimmericle@dishmail.net or call 846-6345 by the 6th or 20th of the month for publication.

WILLIAMS WEATHERWATCH: JANUARY 2009

by Ray Prag, NOAA Co-op. observer

Although January was certainly dry, with only 1.59" of rain, it wasn't even close to a record.

Only 0.13" was measured in Jan. 1985. With the month's rainfall nearly 5" below average, the rainy season total (since Sept. 1) stands at 12.59", far below the average of 21.41". Although there was a trace of snow on the 26th, there were only eight mornings with fog in Jan. Temperatures were cool, with a low of 21° F on the 18th and many mornings in the 20s. The high temp. was 56° F on Jan. 7.



THE FIELD OF EQUINOMICS

by Nicky Burrows

On a drive through the Williams Valley, it's easy to notice pastures full of horses lining nearly every road. But are you aware of how many of your neighbor's careers and economic lives are affected by those pastures full of horses? Horses are big business, and our local economy is a main shareholder and beneficiary. Behind pastoral scenes of grazing beauties, people here are earning the money spent on horse ownership.

Let me list a few of the jobs done by Williams folk:

Blacksmiths – earning \$25 - \$120 per horse.

Veterinarians and Vet techs – several of our Williams neighbors are employed at vet facilities. A horse costs an average of \$200 per year in vaccines and dental care.

Horse trainers and riding instructors – horse whisperers in Williams charge \$25 - \$45 per hour.

Contractors and carpenters – who build and repair barns, outbuildings and fences. Horses are notoriously hard on structures!

Backhoes, tractors and hay mowers and balers – equipment operators prepare arenas, dig trenches, mow, rake and bale hay.

Breeders and sellers of horses – and stud service owners who earn extra income.

Hay growers – A ton of it costs around \$225. A horse eats two or more tons per year.

Services – thriving include horse blanket repair, farm-sitting and Back-country guided trips.

Pine-Roc – sells lots of "horse property."

Horse owners also own trucks, trailers, tractors and saddles purchased in Grants Pass or Medford. They belong to Brushriders, the Gaited Horse Club, Josephine County Equestrian Coalition and So. Oregon Horse Activities Club among other organizations. They volunteer at Lake Selmac, Willow Prairie, Lily Glen and other public campgrounds. They put on horse shows and community events that use food service, facilities rentals and specialty clothing.

Yes, there is an economic crisis nationally. But here in Williams, our horses keep the money flowing. Hug a horse today!

LET'S OPEN THE WILLIAMS BRANCH LIBRARY

by Bonnie Johnson

Come meet the remarkable board members from Josephine Community Libraries, Inc.(JCLI), who are coming to Williams to brainstorm with us about how to open the Williams Branch Library.

After successfully raising funds to reopen the Grants Pass Branch Library of the Josephine Community Libraries, the board members are coming out to Williams to meet community members and plan for the reopening of the Williams branch library. This would mean we would be able to borrow the 157,000 books, magazines, DVDs, CDs and media currently owned by Josephine County libraries and have them delivered to our local branch. These board members are extraordinary people - educators, builders, attorneys, and just plain library lovers. They have donated up to 40 hours a week of their time to raise money and reopen libraries - it's time to talk with them about how Williams can participate in this success story.

Please join us Tuesday evening, February 17, at the Williams Grange at 7:00 PM. This is a real grassroots, participatory effort to join the NPR model of voluntary fund raising to support an organization that is vital to our local community. Volunteers are gratefully welcomed, and sign-ups for new library cards will be available. For more information, please contact Prem Miles @ 846-6718, or Bonnie Johnson @ 846-6016.

Thank you! Hope to see you there!

WILLIAMS FRIENDS OF THE LIBRARY NEWS

by Prem Miles

Williams Friends of the Library will be holding our first meeting for 2009 on Tuesday, February 17 @ 2pm on the lawn behind the Williams Library in a sunny spot. If it rains, we will move the meeting into the school gym. Please bring your own chair or blanket for the meeting. This is a public meeting open to everyone in the community. For more information, please call Prem Miles @ 846-6718 or e-mail: pm_proper@yahoo.com

WILLIAMS, OREGON IS HOME BASE FOR NEW AMAZONIA NON-PROFIT

by Paul Torrence

A Williams, Oregon resident is Project Director of a new non-profit group, Amazon Fund International, which focuses on the preservation of nature and culture in the Amazon Basin of South America.

Paul Torrence, Project Director said that folks may ask "What does the Amazon have to do with Oregon?" In fact, Oregon and the Amazon are closely connected since the Amazon has been called 'the lungs of the planet', crucial in absorbing carbon dioxide, providing us with oxygen, and moderating global warming and climate change. In addition, this tropical forest contains 10% of the species on earth and provides a rich resource for discovery of medicines of the future."



Torrence admits, "These are tough economic times to be a non-profit start-up, but time is running out for the Amazon...and for us."

More information about this project can be found on the web at: www.amazonfundinternational.org

Requests for additional information can be emailed to Amazon Fund International project manager Paul Torrence (paul@amazonfundinternational.org).

Amazon Fund International is a spin-off of the Dutch non-profit Amazon Fund. Together, they employ a community-based approach that differentiates them from many other organizations. "Presently, our efforts are focused in a region of northwestern Bolivia that includes Madidi National Park and Pilón Lajas Biosphere Reserve near the town of Rurrenbaque. Many experts consider this region as one of richest in plants and animals on the Earth".

"Closely tied to the fate of these biological treasures is the fate of the indigenous peoples who depend on these forests. Indigenous culture and nature benefit each other," according to Torrence. "We want to support both. Capacity building in indigenous communities will do just that."

Amazon Fund International and its sister organization have projects to establish a field study center and a wildlife rehabilitation center, provide safe drinking water for communities, support projects in both herbal medicine and drug discovery with strong safeguards to prevent biopiracy, production of other non-timber forest products that avoid forest degradation, and assistance in formation of strong community organizations that can advocate for indigenous interests.

Amazon Fund International is a project of International Humanities Center, a nonprofit organization under Section 501(c)(3) of the IRS Code.

AVIOD SPIRITUAL DANGER!

submitted by Paul Torrence

"There are two spiritual dangers in not owning a farm. One is the danger of supposing that breakfast comes from the grocery, and the other that heat comes from the furnace.

To avoid the first danger... plant a garden, preferably where there is no grocer to confuse the issue. To avoid the second, he should lay a split of good oak on the andirons, preferably where there is no furnace, and let it warm his shins while a February blizzard tosses the trees outside..."



~ Aldo Leopold: *The Good Oak*

THE WILLIAMS WATERSHED LOCAVORE POT-LUCK SERIES CHALLENGE

submitted by Richard Reames

WHEN: March 21st at 5pm, eat at 6pm

WHERE: Williams Grange

WHAT: Bring a dish of food that is 100% from the Williams Watershed. (From the top of Greyback Mt. to the Applegate River)

Bring a printed recipe of your dish for the "Williams Locavore Seasonal Cook Book"

Food can be homegrown, purchased from any of our wonderful local farmers, ranches, dairies or wildcrafted.

The Williams Watershed Locavore Pot Luck will be held 4 times in 2009 Spring, Summer, Winter, and Fall.

A locavore is someone who eats food grown or produced locally or within a certain area or watershed. The locavore movement encourages people to eat direct from local farmers, produce their own or forage for food. Local products are fresher, more nutritious and taste better. Locally grown food is an environmentally friendly means of obtaining food that consumes less energy for transportation.

This will be a great way to learn what is locally available in Williams each season and how to prepare it. This will also be a good way to promote your Williams farm or ranch.

LOCAVOR TIP: Burnt coltsfoot (herb) makes a decent salt substitute and applesauce works well as a replacement for oil in baking.

<http://williamslocavore.blogspot.com>



MAKE YOUR WAY TO THE OUT OF THE WAY CAFÉ

by Ashley Hambleton

Even though the Groundhog couldn't find his shadow, we're not going back to bed! The sun's shining in Southern Oregon, and we've re-opened the doors to our multi-faceted café, bar, community center and dance hall!

After pseudo-successfully navigating our 1st year in business, we now know that the restaurant business is a tricky affair, with 1 in 10 still open 5 years later. So we've trimmed our sails and re-tooled our operations to continue to provide everyone with fresh, fast, delicious food and drink for here (outdoors, too) and to-go.

We've got live "dinner" music Fridays (6-9) and a more raucous and dance-able band on Saturdays (9-12). Our Perpetual Ping-Pong Tournament paddles along Wednesdays starting @ 7:00, and on the 1st and 3rd Thursdays of the month Benevolent Buzz returns to host Open Mic beginning @ 6:00! Come-on-out and Sing for your Supper!!

Our ever-revising Menu now includes the Recession Special: Pasta Dinner with your choice of 3 homemade sauces for only \$7. As well, we'll continue the Fresh Catch (Fish) Dinner Saturday night, and a succulent selection of either Prime Rib, Tri-Tip or Steak Dinner Friday night. On the other side, we'll be unable to offer Pizza, for now, 'till we either fix our equipment or purchase another oven. Sorry...

And new to our Drinks Selection, we're offering Plaisance Ranch's Organic Wines, by the bottle only (take home what you can't finish, or share with friends). Our neighbors have crafted some wonderfully delicious viticulture delights.

And get this wish: One of our local heroes is stepping-up to offer a continental-style breakfast very soon (don't worry, we won't schedule it during the Grange's Pancake Breakfast). Also, we've finally dialed-in the espresso machine, and are brewing high-quality Mochas, Americanos and Mate Lattes.

Thanks for all-ya'lls support and patience. Come in and let us serve you again!

**OUR NEW HOURS ARE:
Wed - Fri: 11-9 & Sat: 11-12**

ODDS 'N' ENDS

by Pat Rickert

The Handmade Quilts display at the Williams Grange on Sunday, February 8th was a sight to behold. It was like holding your eye to a kaleidoscope. Rich, vibrant colors everywhere with a turn of the head.

In all, there were 48 quilts, quite a number for our small community and there could have been more, but space was limited. The oldest quilt on display was made in 1978 for Seaira Jameel Safady. Right next to it was a quilt made for his daughter, Amy, in 2005. Some of the squares on Amy's quilt were made by the same sisters who did squares for Seaira. The quilts mostly celebrated births, but there were ones honoring birthdays, coming of age ceremonies and a wellness quilt too. Tressi Albee deserves the community's appreciation for organizing the event. On a cold, gray day the colorful display brightened the heart.

The "false spring" we seem to get every February sure stirs the body to want to go out and plant, but this dry winter, so far, is worrisome. Let's hope we catch up with some moisture, rain or snow, in the weeks to come.

There is a movement to help get the Williams branch of the library opened again. But the citizens of the community will need to get behind the effort. Let's hope that enough people step forward with help and donations to help make that happen.

"Knowledge will forever govern ignorance; and a people who mean to be their own governors must arm themselves with the power which knowledge gives."
James Madison

ARE YOU A REAL LOCAL?

Correct Answers

- | | |
|-------|-------|
| 1. f | 12. m |
| 2. a | 13. o |
| 3. r | 14. u |
| 4. b | 15. h |
| 5. q | 16. s |
| 6. d | 17. t |
| 7. e | 18. g |
| 8. c | 19. j |
| 9. k | 20. n |
| 10. p | 21. i |
| 11. l | |

THE TREE CONSPIRACY

by Charles Frest

While traveling through the lushly forested Applegate Valley the other day, I heard an advertisement on the radio asking people to contact Governor Kulongoski to urge him to allow Southern Oregon to manage our forests properly (which means cut down more trees).

The announcer went on to explain that the overabundance of trees causes forest fires which emit green house gases into our atmosphere; this in turn causes global warming which can harm our environment and even endanger the existence of mankind. What a revelation this was to me, knowing what deadly peril my once beloved trees now pose to me.

That is not the only way trees are causing a threat to humans. Many people die every year in auto accidents where they run off the road into a tree. It is not all that uncommon for people to be injured by trees that fall on houses, cars, or individuals. One of my childhood friends became paralyzed for life after an accident jumping into a river from an enticing oak tree. It is a well known fact that broken off branches become lethal projectiles in hurricanes.

Forest fires not only cause harm to the environment with the emission of toxic green house gases, they can horribly maim or kill the firefighters. Many loggers are killed and injured trying to eliminate these treacherous beasts.

Every year numerous people are injured falling off of ladders while trying to remove the vile tree droppings from their gutters. Vicious tree roots have been known to cause millions of dollars of damage when they methodically break away the cement in city sidewalks all across America. There have been many homeowners victimized by these malicious roots creeping into their sewer lines. Humans are not the only ones affected by these bark and leaf encrusted predators; many baby birds and other hapless animals fall to their deaths from the precarious heights of these seemingly innocuous assassins.

After listening to the commercial and examining the facts, it is obvious that there is a tree conspiracy to eliminate the human race. It seems apparent to me that we have no choice but to eradicate these dangerous creatures. So fire up your chain saw and help save humanity from the malicious onslaught of the killer trees!

Classifieds

STORE FRONTS	SERVICES	LANDSCAPING
WILLIAMS GENERAL STORE 846-6212	GRAYBACK AUTOMOTIVE REPAIR & SERVICE Ed & Cody 846-9303 20275 Williams Highway	COMPOST MAN HORSE COMPOST, DAY LILIES, BAMBOO & GRASSES CALL FOR PRICES 846-6002
PINE-ROK REALTY (O) 846-7131 (F) 846-6780 Jo Harrison, Paula Sepolpo, Walter Simpson, Bill Ertel PO Box 203 / 165 Tetherow Rd. www.pine-rok.com	HIGHSPEED INTERNET www.applegatebroadband.net 846-7135 Starting at \$44.95/month Long-distance phone & Broadband for \$65/month	FOR SALE PLAISANCE RANCH WINE, ARTISAN BREAD & USDA CERTIFIED ORGANIC BEEF Now available at the ranch. Individual cuts or wholes & halves. 846-7175 or 218-7858
THE PROVOLT COMMUNITY HALL (formally Grange Hall) is available to rent. Anyone interested in reserving the building please call Judy Towne at 659-7499	ALL KINDS OF REPAIRS Kitchen, Bath, Decks, Farm & Fence. 23 years experience, reasonable rates and local references. Greg: 846-0694	FLORA Local, organically-grown cut flowers for your wedding or special event. Available June-September Contact Stacey Denton: 846.0919 www.weddingflora.com
OUT OF THE WAY CAFE 846-6666 (serving organically raised, locally grown) Burgers, Pie & Beer, nightly specials OPEN WEDS. - SAT. *music on weekends*	LAND SURVEYOR Boundaries, line adjustments, partitions, easements Jonathan Spero R.P.L.S. #2309 846-6845 or sperosurveying@mcmatters.net	FULL CIRCLE BISON RANCH Buffalo Meat available by the lb. Steaks, Roasts, Ground No Antibiotics or Hormones 846-1351 www.fullcirclebisonranch.com
SPIT 'N' POLISH ANTIQUES Brian Barton & Susan Bondesen 2300 Cedar Flat Rd. 846-0260 (Phone First)	KENDON LEET REAL ESTATE Rural Property Specialist serving all of So. Oregon w/ emphasis on on Williams & Applegate Valleys. 846-0125 or 660-7996 kendon@kendonleet.com	DRAGONFLY BABY ORGANICS 100% organic baby clothing and accessories. Free shipping/delivery to all Williams residents on call-in orders. Check out our website dragonflybabyorganics.com 846-0848
WILLIAMS COUNTRY STORE *OPEN EVERY DAY* Diesel, Gas, Propane & Groceries 120 E. Fork Rd 846-1311	MASSAGE/BODYWORK RAINDROP THERAPY Physical,emotional, mental & spiritual healing Nutritional counsel Beloved: 846-7525	CLASSES JAZZERCISE! With Pam Walters Provolt Hall in Provolt 6:00 P.M. continuing every Tuesday & Thursday Questions? 441-4090
CONSTRUCTION	MYCOMMUNITYMATTERS.NET High Speed Dial-up, Website Hosting, & More. Call now for a free month of service. 846-0456	ADVERTISING GUIDELINES Classes & Events: Classified ad: \$2, or Display ad: 1/4 pg \$4, 1/2 pg \$8 We accept ads from residents, organizations, & businesses based in Williams. Classified Ads: maximum 125 characters, inclusive of spaces. Please include payment with your ad.
STRAIGHTEDGE CONSTRUCTION New homes, remodels, additions, framing, finish Larry Hart License #32897 846-6174	Goods & Services, Rentals, Help-Wanted, For-Sale Classified ad only: \$4	
STELLSTONE MASONRY Protects • Beautifies • Endures Russ Stellplue 846-6504 Installation of ALL masonry products. Estimates available. License #068936	R.W. CASSIDY, INC. Lic. #166059 Solar Energy Installations. Energy Trust # 10096 Free Estimates & Information 846-1248	